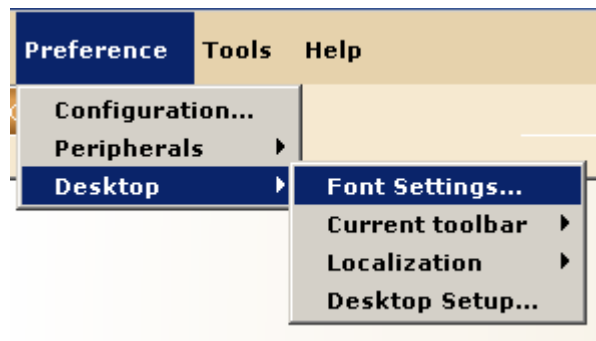


Changing Font Size in WorkFlows

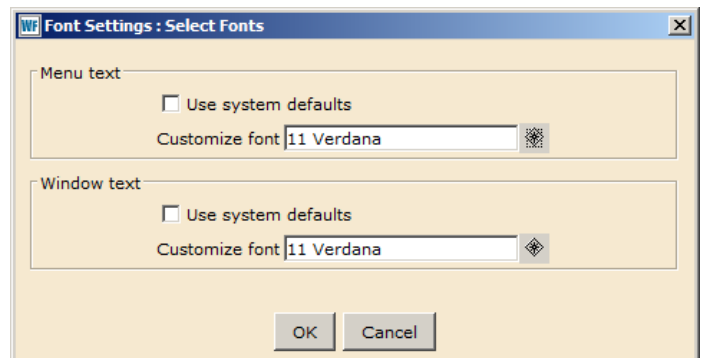
The upgrade to version 3.5.1.1 allows users to change the font size for both the toolbar and/or the text in the wizards.

Log into WorkFlows, along the top select
 Click on Preference hover over Desktop and select Font settings

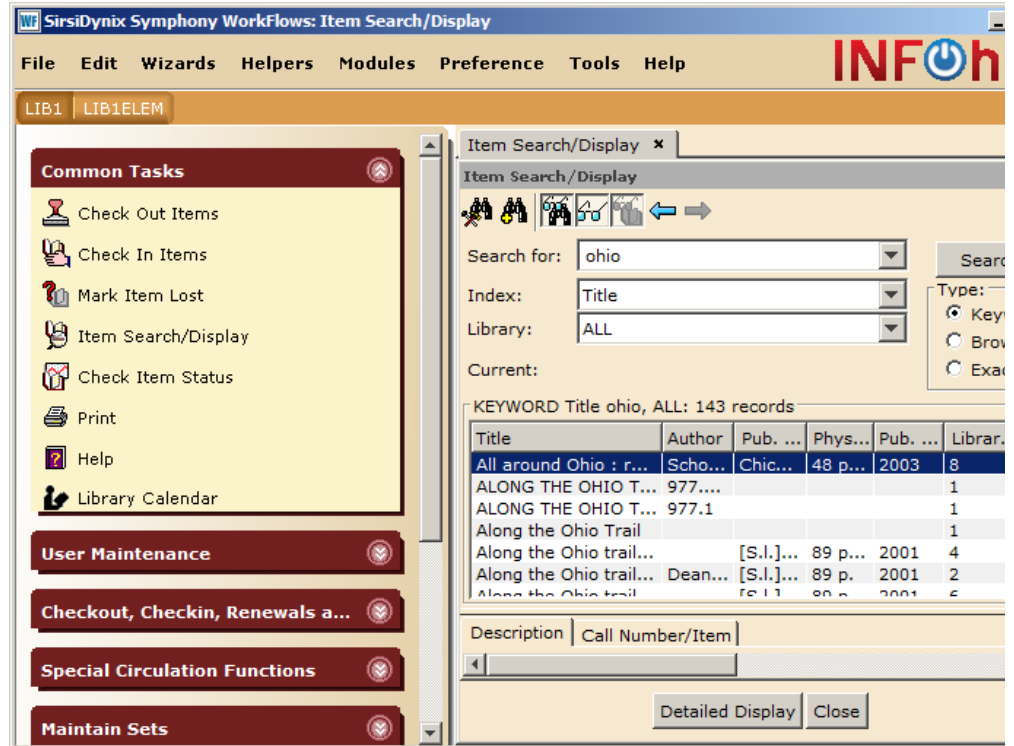
1. Log into WorkFlows, along the top
2. Click on Preference
3. Hover over Desktop
4. And select Font settings



5. There are two options available
 - a. Menu Text: changes the buttons on the toolbar at the left and along the top
 - b. Windows Text: changes the size of the text on the wizard screens and popup windows

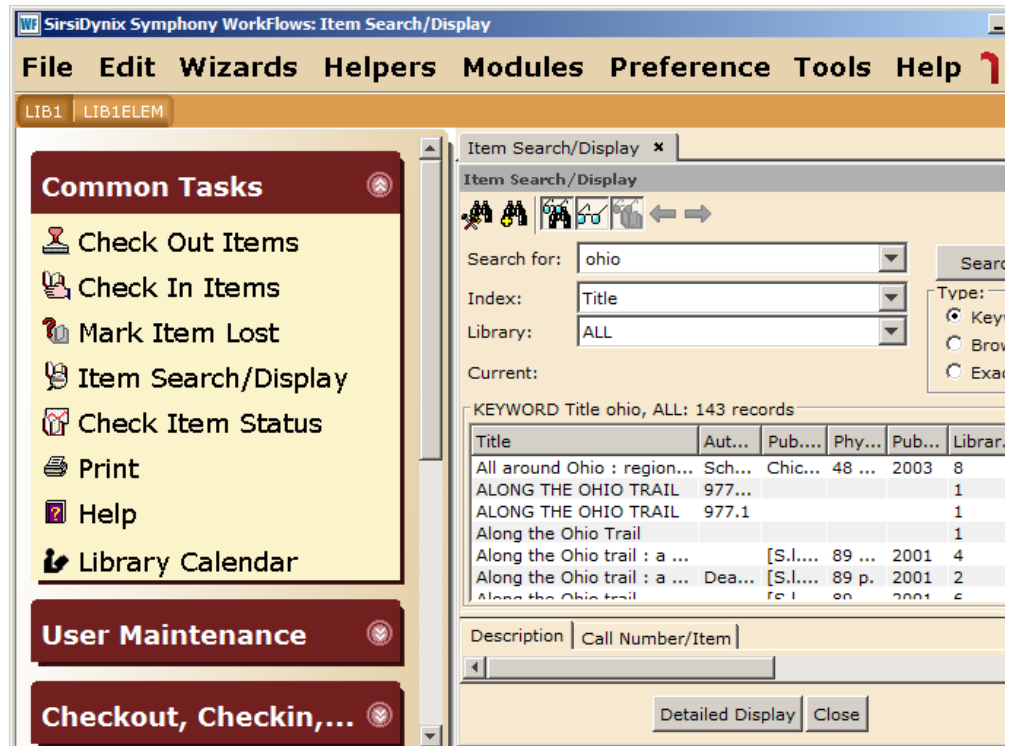


Standard view



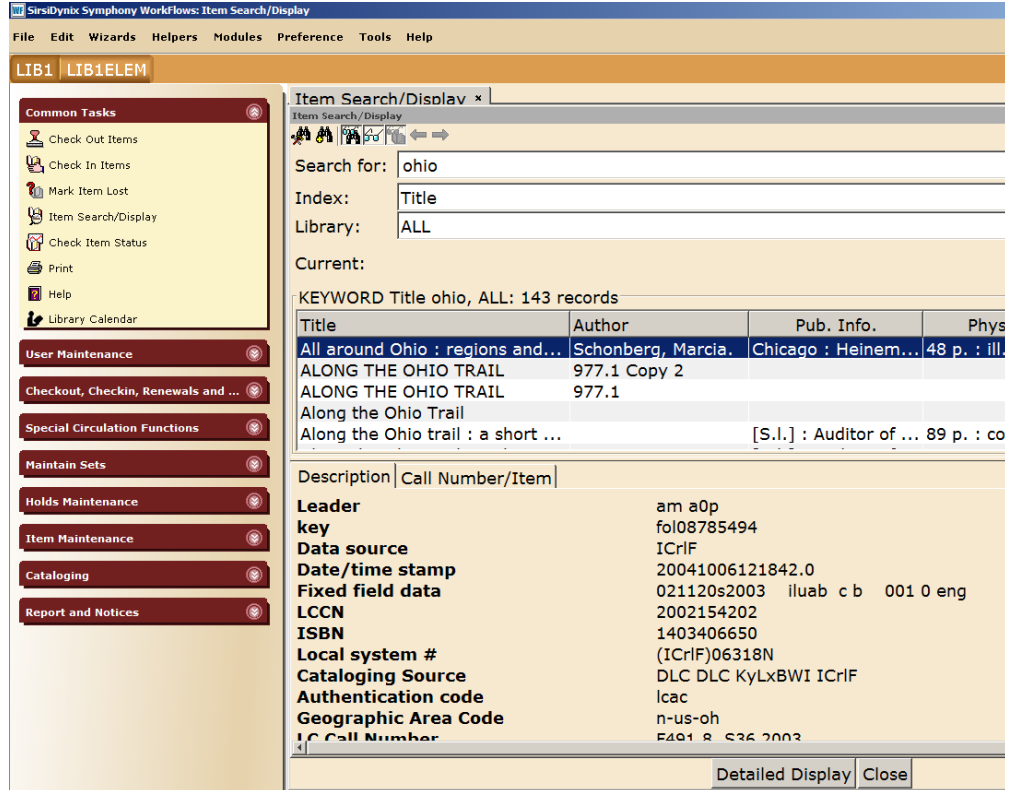
Menu Text Option

Menu at top is larger
Menu at left is larger
Text inside wizard screens
and windows are
unchanged



Window Text Option

Menu at top is unchanged
 Menu at left is unchanged
 Text inside wizard screens
 and windows are larger



Menu Text selected
 And
 Window Text selected

Menu at top is larger
 Menu at left is larger
 Text inside wizard screens
 and windows are larger

